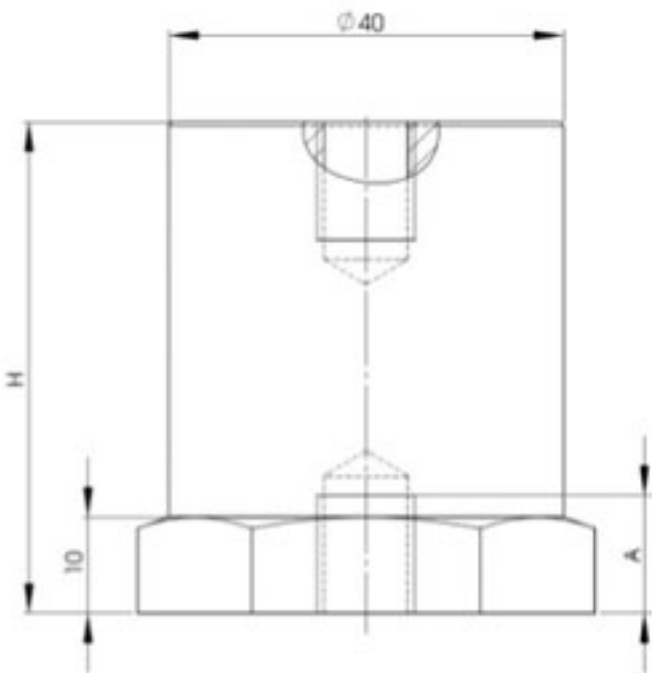


Spacing isolator Type CT/P



Made of Polyglas-polyester material, reinforced with fiberglass, colour red, self-extinguishing.

Operating temperature: -40 °C up to +130 °C
Fire resistance class: UL94-V0



Art.-no.	Typ	H [mm]	sw* [mm]	D1 [mm]	U _M [V]	M	A [mm]	Packaging unit [pcs.]
90118	CT/P 30	30	41	40	750	M8	8	45
90119	CT/P 30	30	41	40	750	M10	9	45
90120	CT/P 35	35	41	40	750	M8	9	36
90121	CT/P 35	35	41	40	750	M10	9	36
90122	CT/P 40	40	41	40	1000	M8	12	27
90123	CT/P 40	40	41	40	1000	M10	12	27
90123M12	CT/P 40	40	41	40	1000	M12	12	27
90124	CT/P 45	45	41	40	1000	M8	13	27
90125	CT/P 45	45	41	40	1000	M10	12	27
90126	CT/P 50	50	41	40	1500	M8	12	27
90127	CT/P 50	50	41	40	1500	M10	13	27
90127M12	CT/P 50	50	41	40	1500	M12	11	27
90129	CT/P 55	55	41	40	1500	M10	12	18
90130	CT/P 60	60	41	40	1500	M8	18	18
90131	CT/P 60	60	41	40	1500	M10	18	18
90131M12	CT/P 60	60	41	40	1500	M12	18	18
90133	CT/P 65	65	41	40	1500	M10	18	18
90134	CT/P 70	70	41	40	1500	M8	18	18
90135	CT/P 70	70	41	40	1500	M10	18	18

* sw = wrench width

Type	Thread	Ripple current resistance [kV]	Discharge voltage [kV]	Max. tensile load [kN]	Max. bending load [kN]	Max. compression load [kN]	Max. tightening torque [Nm]
CT/P 30	M8	8	20	10	7.5	80	21.5
CT/P 30	M10	8	20	10	7.5	80	43.0
CT/P 40	M8	10	25	10	7	80	21.5
CT/P 40	M10	10	25	10	7	80	43.0
CT/P 40	M12	10	25	10	7	80	73.8
CT/P 50	M8	10	35	10	5	80	21.5
CT/P 50	M10	10	35	10	5	80	43.0
CT/P 50	M12	10	35	10	5	80	73.8
CT/P 60	M8	10	35	10	3.7	80	21.5
CT/P 60	M10	10	35	10	3.7	80	43.0
CT/P 60	M12	10	35	10	3.7	80	73.8